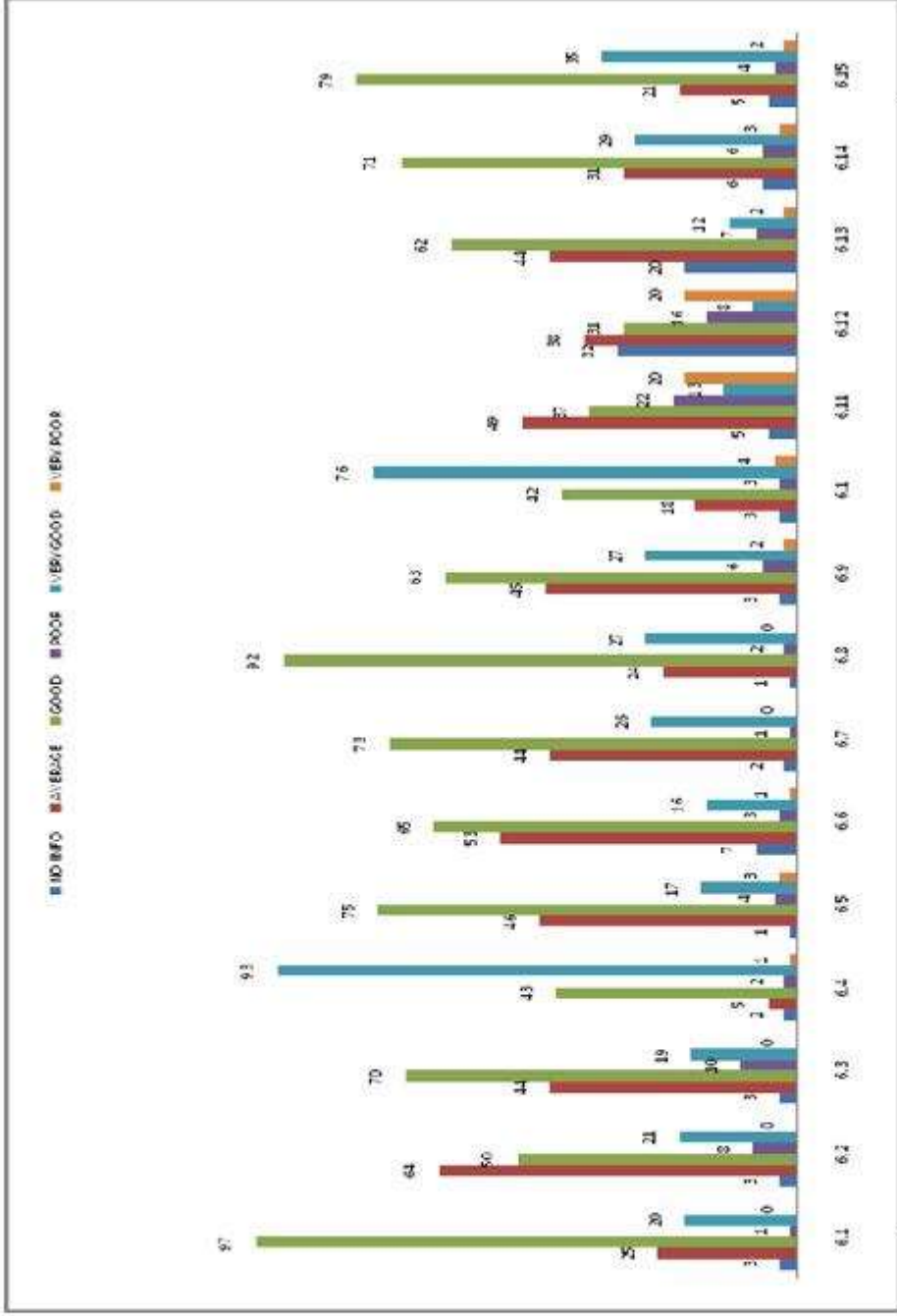


Annexure – II

Feedback: 2013-14

Overall rating of Programme by Students Year 2013-14

Question	NO INFO	AVERAGE	GOOD	POOR	VERY GOOD	VERY POOR
6.1	3	25	97	1	20	0
6.2	3	64	50	8	21	0
6.3	3	44	70	10	19	0
6.4	2	5	43	2	93	1
6.5	1	46	75	4	17	3
6.6	7	53	65	3	16	1
6.7	2	44	73	1	26	0
6.8	1	24	92	2	27	0
6.9	3	45	63	6	27	2
6.10	3	18	42	3	76	4
6.11	5	49	37	22	13	20
6.12	32	38	31	16	8	20
6.13	20	44	62	7	12	2
6.14	6	31	71	6	29	3
6.15	5	21	79	4	35	2

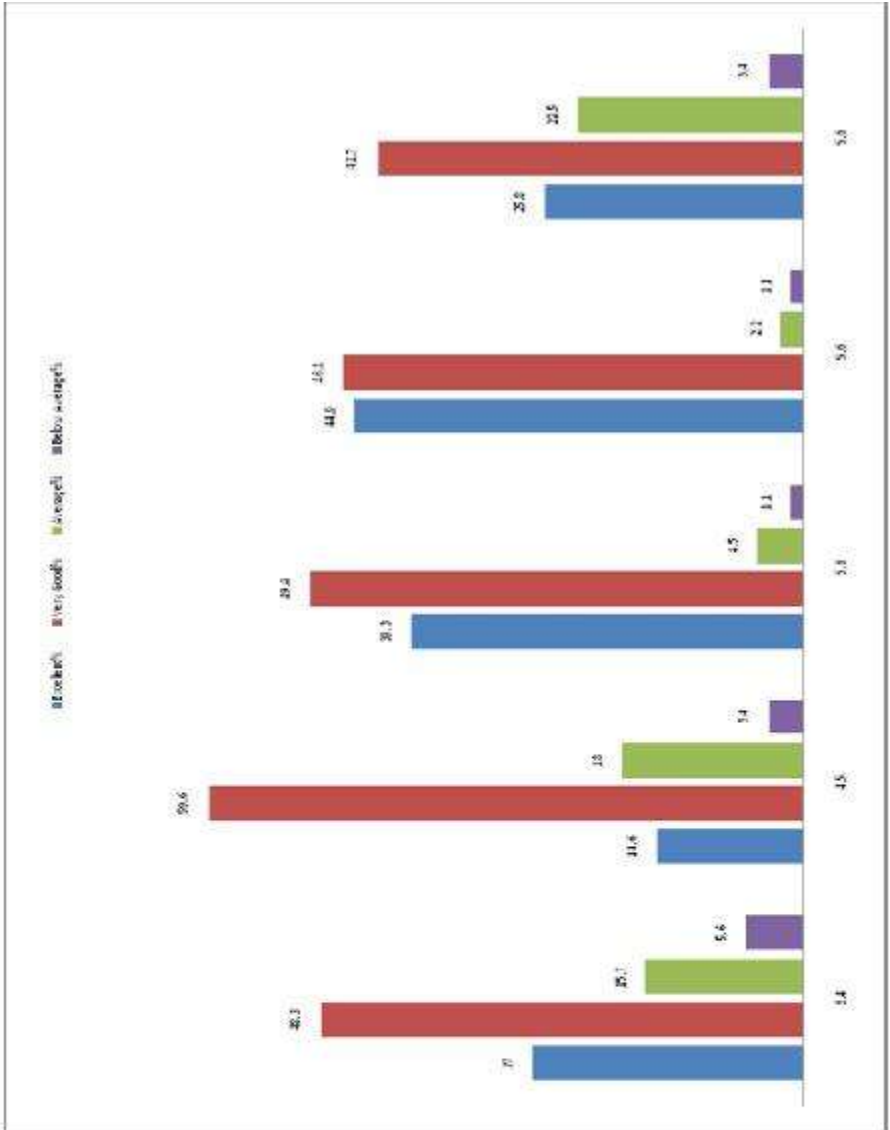


Student's Feedback on Teachers Rating (%) Year 2013-14

No Info	0-5.5	5.5-7.0	7.0-8.5	8.5-10
0	0.4	4.4	54.7	40.4
0.9	1.8	24.0	52.4	20.9
0.0	1.8	12.4	43.1	42.7
0.4	1.8	13.3	48.0	36.4
0.0	5.3	26.7	39.1	28.9
0.0	6.2	23.6	45.8	24.4
0.0	5.3	21.3	35.1	38.2
0.4	3.1	24.9	36.0	35.6
0.0	4.0	19.1	47.1	29.8
0.9	1.3	8.4	43.1	46.2

Student's Feedback on Teachers rating (%) Year 2013-14

No Info%	Excellent%	Very Good%	Average%	Below Average%
3.4	27	48.3	15.7	5.6
4.5	14.6	59.6	18	3.4
5.6	39.3	49.4	4.5	1.1
5.6	44.9	46.1	2.2	1.1
5.6	25.8	42.7	22.5	3.4



Sample Survey: 2013-14

Class	Total Students	No. of Sample	Percentage
B.Com. Sem.I	473	50	10.57
B.Com. Sem.III	522	68	13.03
B.Com. Sem.V	456	50	10.96
B.Sc. Sem.I	403	146	36.23
B.Sc. Sem.III	324	70	21.60
B.Sc. Sem.V	259	89	34.36

Students' Feedback on Course (Overall Rating)

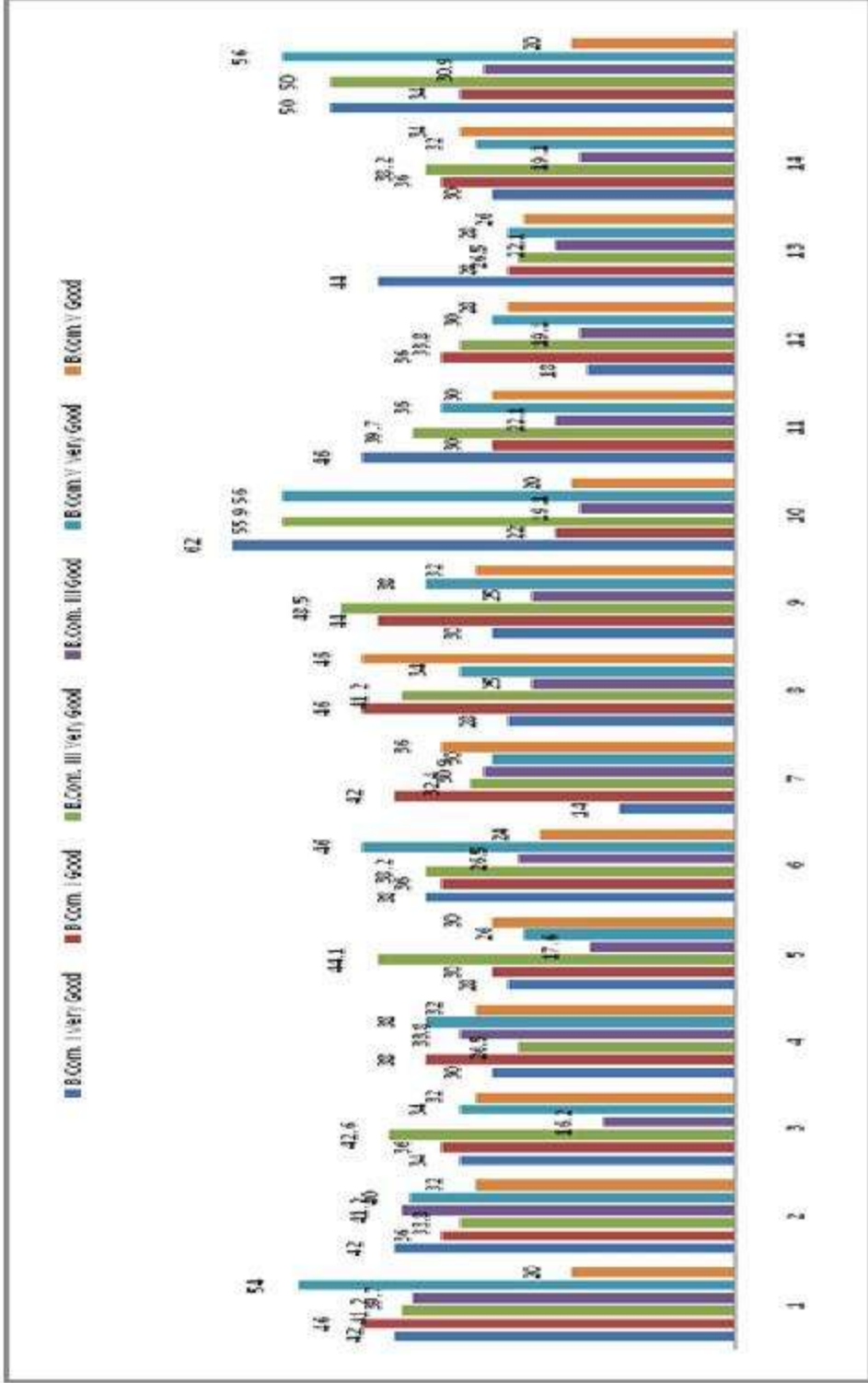
Faculty	Science Subject	
	Excellent	Very Good
Science	58.8	38.2
	Commerce Subject	
Commerce	26	26

Students' Feedback on teachers

Class	Rating	
	8.5-10.0	7.0-8.5
B.Sc. Sem.II	41.8%	49.3%
B.Sc. Sem.IV & VI	75%	22%
B.Com.	46.2%	43.1%

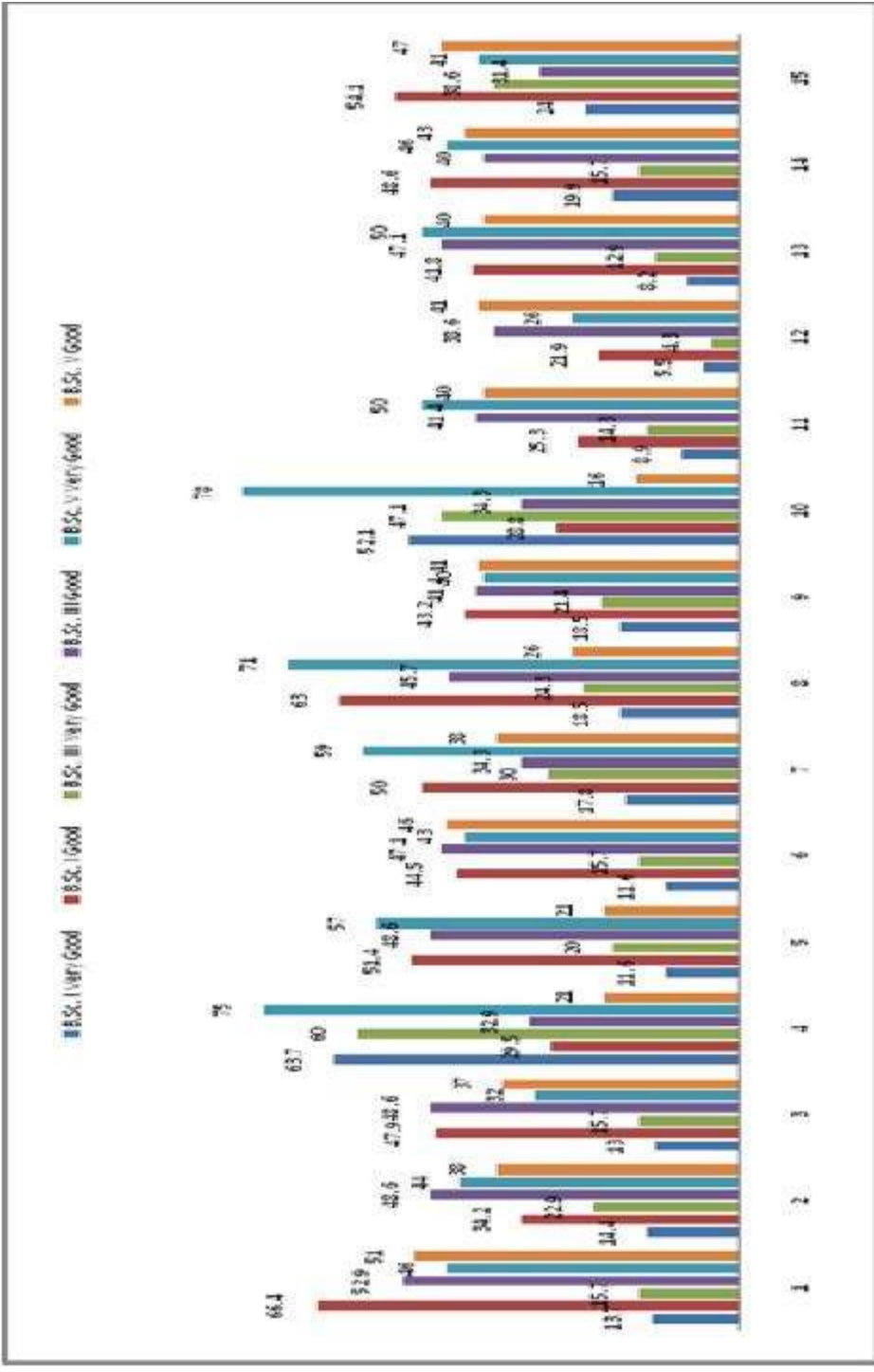
Overall Rating of Programme by Students in %

Sr. No.	Item	B.Com. I		B.Com. III		B.Com.V	
		Very Good	Good	Very Good	Good	Very Good	Good
1	Academic Content	42	46	41.2	39.7	54	20
2	Usefulness of teaching materials	42	36	33.8	41.2	40	32
3	Usefulness of study-groups in furthering learning	34	36	42.6	16.2	34	32
4	Timeliness of practical work	30	38	26.5	33.8	38	32
5	Educative value of mid-programme placement	28	30	44.1	17.6	26	30
6	Giving and getting helpful feedback	38	36	38.2	26.5	46	24
7	Fairness of evaluation	14	42	32.4	30.9	30	36
8	Interaction with faculty	28	46	41.2	25	34	46
9	Interaction with administration	30	44	48.5	25	38	32
10	Library facilities	62	22	55.9	19.1	56	20
11	Computer facilities	46	30	39.7	22.1	36	30
12	Hostel facilities	18	36	33.8	19.1	30	28
13	Recreational facilities	44	28	26.5	22.1	28	26
14	Extra-curricular activities	30	36	38.2	19.1	32	34
15	Sports facilities	50	34	50.0	30.9	56	20



Overall Rating of Programme by Students in %

Sr. No.	Item	B.Sc. I		B.Sc. III		B.Sc. V	
		Very Good	Good	Very Good	Good	Very Good	Good
1	Academic Content	13.7	66.4	15.7	52.9	46	51
2	Usefulness of teaching materials	14.4	34.2	22.9	48.6	44	38
3	Usefulness of study-groups in furthering learning	13.0	47.9	15.7	48.6	32	37
4	Timeliness of practical work	63.7	29.5	60.0	32.9	75	21
5	Educative value of mid-programme placement	11.6	51.4	20.0	48.6	57	21
6	Giving and getting helpful feedback	11.6	44.5	15.7	47.1	43	46
7	Fairness of evaluation	17.8	50.0	30.0	34.3	59	38
8	Interaction with faculty	18.5	63.0	24.3	45.7	71	26
9	Interaction with administration	18.5	43.2	21.4	41.4	40	41
10	Library facilities	52.1	28.8	47.1	34.3	78	16
11	Computer facilities	8.9	25.3	14.3	41.4	50	40
12	Hostel facilities	5.5	21.9	4.3	38.6	26	41
13	Recreational facilities	8.2	41.8	12.9	47.1	50	40
14	Extra-curricular activities	19.9	48.6	15.7	40.0	46	43
15	Sports facilities	24.0	54.1	38.6	31.4	41	47



Feedback: 2014-15

1. Student's feedback on course (overall rating)

Science:

According to 58.8% students the course is an excellent and 38.2% students consider it very good.

Rest of 3% students considers it in an Average, Poor and Very Poor. So we have greater amount of students who believe in category of excellent and Very Good.

The Aggregate Percentage of Very Good and Excellent is 97.0%

Commerce:

According to 26% students the course is an excellent and other 26% put it in Very Good category aggregation Percentage of Commerce is 52%, 50 students believe that the course is an Average.

2. Student's feedback on teachers (overall rating)

B.Sc. :

79% students give 8.5 to 10 rating to Professors. Most of students believe that professors have good qualities.

B.Com.:

89% students give 7.0 to 10 rating to Professors. Students believe the professors have good qualities.

3. Overall Rating of Programme by students (in %)

Due to the 15 different matters of questionnaire for overall rating 32% of Science students consider it Very Good; When the Percentage in Commerce is 38%.

We can conclude that the rating is not so good.